

Kendall County Economic Profile



Comprehensive Economic Development Strategy
October 2012

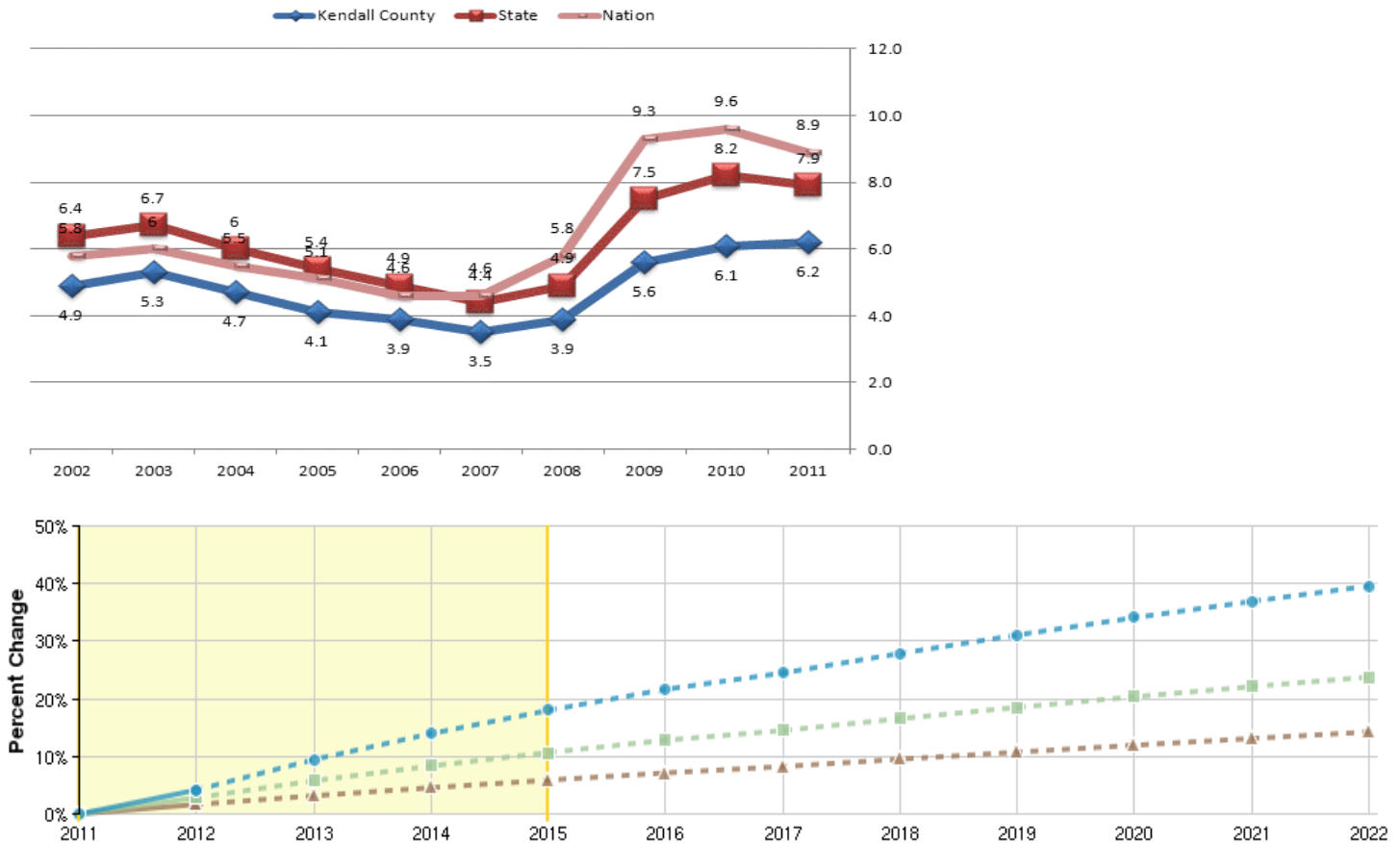
Labor Force Data

The Kendall County unemployment rate averaged to 6.2 percent in 2011, up from 6.1 percent averaged in 2010.

Comparing Kendall County to the state and nation, the Texas unadjusted (actual) unemployment rate averaged 7.9 percent in 2011, while the nation's unadjusted (actual) unemployment rate was 8.9 percent in 2011.

Source: Department of Labor

Regional Trends



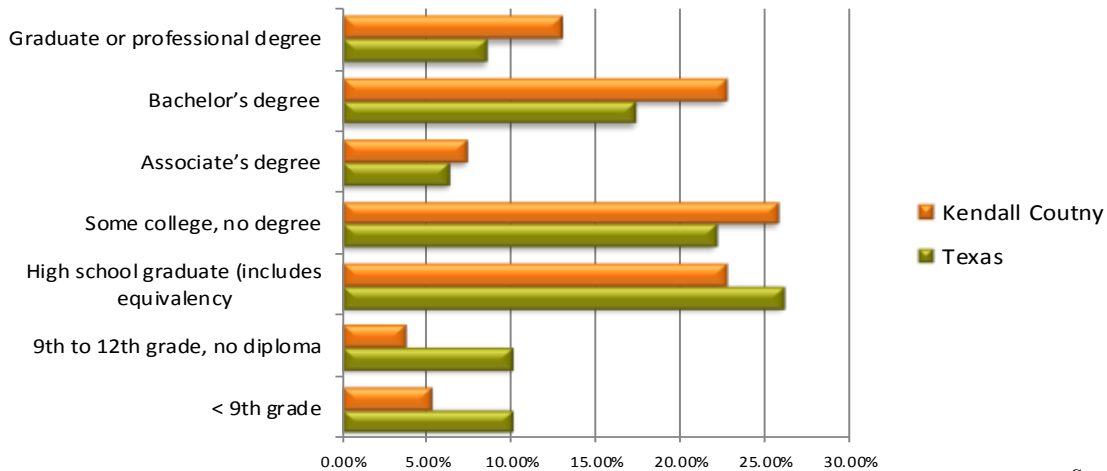
Region	2011 Jobs	2015 Jobs	% Change
Kendall	18,029	21,272	18.0%
State	14,681,471	16,247,350	10.7%
Nation	176,769,254	187,155,067	5.9%

Source: EMSI, Economic Modeling

Population, Educational Attainment, and Industry Data

	Total Population	% Population 20-54	Median Age	Households	Median Household Income	Per Capita Income
US	303,965,272	48.7%	36.9	76,254,318	\$51,914	\$27,334
Texas	24,311,891	49.4%	33.4	8,539,206	\$49,646	\$24,870
Kendall County	31,515	42.6%	43.3	12,055	\$66,655	\$36,418

Source: 2010 US Census



Source: 2010 US Census

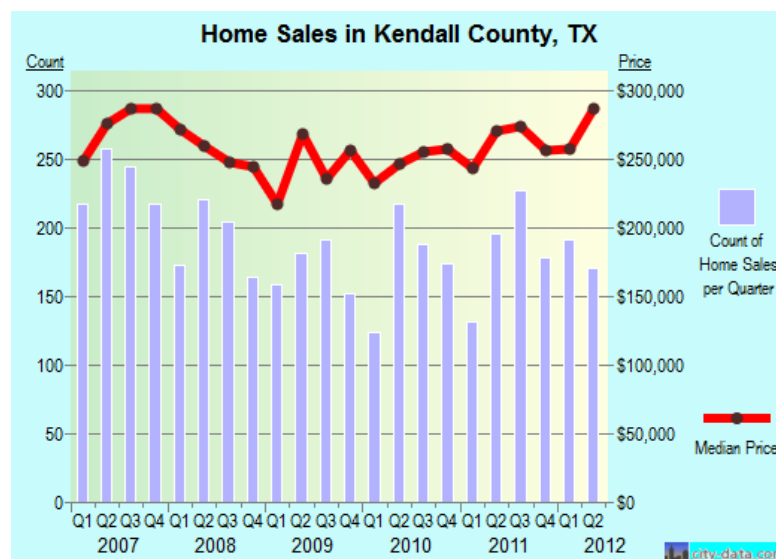
Industry	2012 Jobs	Avg. Earnings (2012)
Agriculture, Forestry, Fishing and Hunting	1,185	\$22,510
Mining, Quarrying, and Oil and Gas Extraction	53	\$51,196
Utilities	23	\$64,411
Construction	1,829	\$45,573
Manufacturing	986	\$47,123
Wholesale Trade	442	\$52,224
Retail Trade	2,411	\$37,384
Transportation and Warehousing	145	\$39,376
Information	192	\$61,041
Finance and Insurance	1,599	\$36,532
Real Estate and Rental and Leasing	840	\$14,580

Industry	2012 Jobs	Avg. Earnings (2012)
Professional, Scientific, and Technical Services	1,549	\$49,964
Management of Companies and Enterprises	8	\$169,595
Administrative and Support and Waste Management and Remediation Services	636	\$33,402
Educational Services (Private)	287	\$29,918
Health Care and Social Assistance	1,662	\$46,064
Arts, Entertainment, and Recreation	484	\$19,293
Accommodation and Food Services	1,281	\$17,099
Other Services (except Public Administration)	1,341	\$23,873
Government	1,825	\$51,671
Unclassified Industry	3	\$26,533

Source: EMSI, Economic Modeling

Economic Strengths and Priorities

- In contrast to recent county and city tax hikes, the Boerne Independent School District announced a reduction in its combined tax rate from \$1.314 per \$100 valuation to \$1.294.
- Livability.com ranked 500 cities across the United States with 25,000 or less residents as best small towns to live and work. Boerne was named #4. They based their rankings on median household incomes, home prices, crime rates, unemployment rates, average commutes and distances to large cities
- The Kendall County Economic Development Corporation is bringing new jobs into Comfort. Mueller Inc., who is a manufacturer of residential metal roofs and steel buildings, recently opened a location on the IH 10 frontage road and will employ approximately 5 people. Love's Truck Stop constructed a new store at the northeast corner of the intersection on 1-10 and U.S. 87 in Comfort in early September. They recently opened their doors in early 2012 and will create approximately 100 jobs
- 67-acres in north Boerne is being developed as a mixed-use business and technology park. Development continues effort to build a bio-medical cluster in the County, leveraging the presence of Mission Pharmacal and Stanbio Laboratory and Boerne's developable land.
- New road connecting East Hwy 46 and South Main will create a new commercial district and town center in Boerne, opening up the city for "new retail" development.
- The City of Boerne is building a new \$26 million wastewater treatment facility, expanding its infrastructure capacity and opening up new economic development opportunities.
- Kendall County has realized both direct and indirect impacts from the Eagle Ford Shale play, with several companies locating to the area and numerous existing companies expanding their footprint.
- A Boerne Starplex Theater is slated to open in February 2013, another new amenity for the area.
- According to www.WalkScore.com, Boerne is rated "very walkable" with a Walk Score of 77 (out of 100), meaning most errands can be accomplished on foot.
- Boerne ISD is ranked 105 out of 942 Independent School Districts in Texas by www.SchoolDigger.com based on statistics from the National Center for Education Statistics, U.S. Department of Education, and Texas Education Agency; high performing school districts are a major draw for people considering residence in the region



Resources

US Department of Commerce (<http://www.bea.gov/index.htm>); TexasAhead (<http://www.texasahead.org/>); Window on State Government (<http://www.window.state.tx.us/taxinfo/sales/>); Texas Industry Profiles (<http://www.texasindustryprofiles.com/apps/cnp/index.asp>).

Economic Development Challenges

- Frontage roads are needed on the east side of IH-10 in Boerne for the area to reach it's commercial development potential.
- Lack of white collar professional jobs for residents of Kendall County.
- Low unemployment and a commuter workforce half of which is employed in the San Antonio metro are significant constraints to further economic development. Approximately half of the jobs in Kendall County are filled with out of county workers.
- The County has no significant post-secondary education presence, limiting access to higher education for residents unable to commute or relocate



Alamo Area Council of Governments
8700 Tesoro Dr., Suite 700
San Antonio, TX 78217-6228
Ph: (210) 362-5200
Fx: (210) 225-5937

www.aacog.dst.tx.us